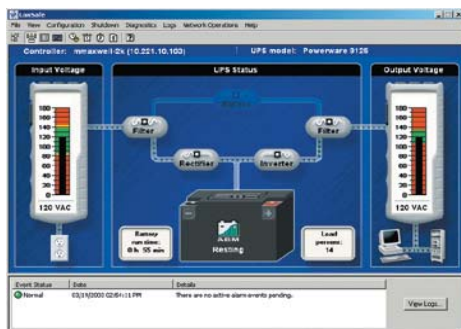


EATON

Powerware

Powerware® LanSafe® Power Management Software

Product Focus



Features

- Sequential SafetyNet shutdown
- UPS group shutdown and control
- Work-in-progress saved throughout the network
- Stealth Mode Operation
- Cost Savings Calculator
- Event history summary
- Battery replacement warning
- Network & serial/USB connections
- Status@aGlance™ feature
- Power on/off scheduling via calendar
- UPS load segment (receptacle) control
- Local/remote UPS power on/off
- Power-on delay
- PowerGraph
- Email alerts
- Network broadcast alerts
- Command execution on UPS alerts
- Personalized UPS alert notifications
- SNMP proxy agent-GET and SET support
- Support for APC UPS

Running mission-critical applications and connecting widely-distributed nationwide and global operations are key strategic initiatives in today's business organizations. The ability to provide a steady, clean and undisturbed power flow to IT hardware in the network is paramount in keeping the systems available at all times.

However, the primary purpose of the IT infrastructure is to process, store and protect the information that is stored or en-route in the network. The data itself, and the ability to move it and process it at any given time, is priceless.

LanSafe power management software provides, in combination with an uninterruptible power system (UPS), the best possible protection for this valuable data. Whether at home or at work, LanSafe has you covered with its unique, proactive risk-management features.

Why Use LanSafe Software?

1. Prevent system crashes – when a power failure outlasts the UPS battery runtime, LanSafe automatically performs a graceful operating system shutdown.
2. Avoid data loss – LanSafe saves all work-in-progress.
3. Protect valuable applications – LanSafe protects from corruption by closing applications in an orderly fashion.
4. Stay informed – monitor and receive UPS alarms via network broadcasts, SNMP, email, pager or mobile phone.
5. Control your power – manage all UPSs on the network, check battery health, and create sequential shutdown scenarios.
6. Communicate with NMS - integrates UPSs into the SNMP network management system.
7. With support for third-party APC UPSs, you can manage a multi-vendor power protection infrastructure with one power management software package, LanSafe.

LanSafe - The revolution of power management

The next generation of LanSafe power management software introduces a number of revolutionary features to the power management arena.

Cost Savings Calculator

The patent pending Cost Savings Calculator can be used to determine the amount of money saved by the UPS solution due to prevented downtime.

Stealth Mode Operation

The exclusive Stealth Mode Operation feature enables

LanSafe to run invisibly in the background without visual traces. This capability is particularly useful when integrating the application into a POS, ATM, or other environment where users should not be aware of LanSafe.

Three Optional Views

The 3-D PowerScope View, along with a new innovation, the ControlRoom View, take the guesswork out of understanding UPS metering and status information. PowerScope is the default for viewing single

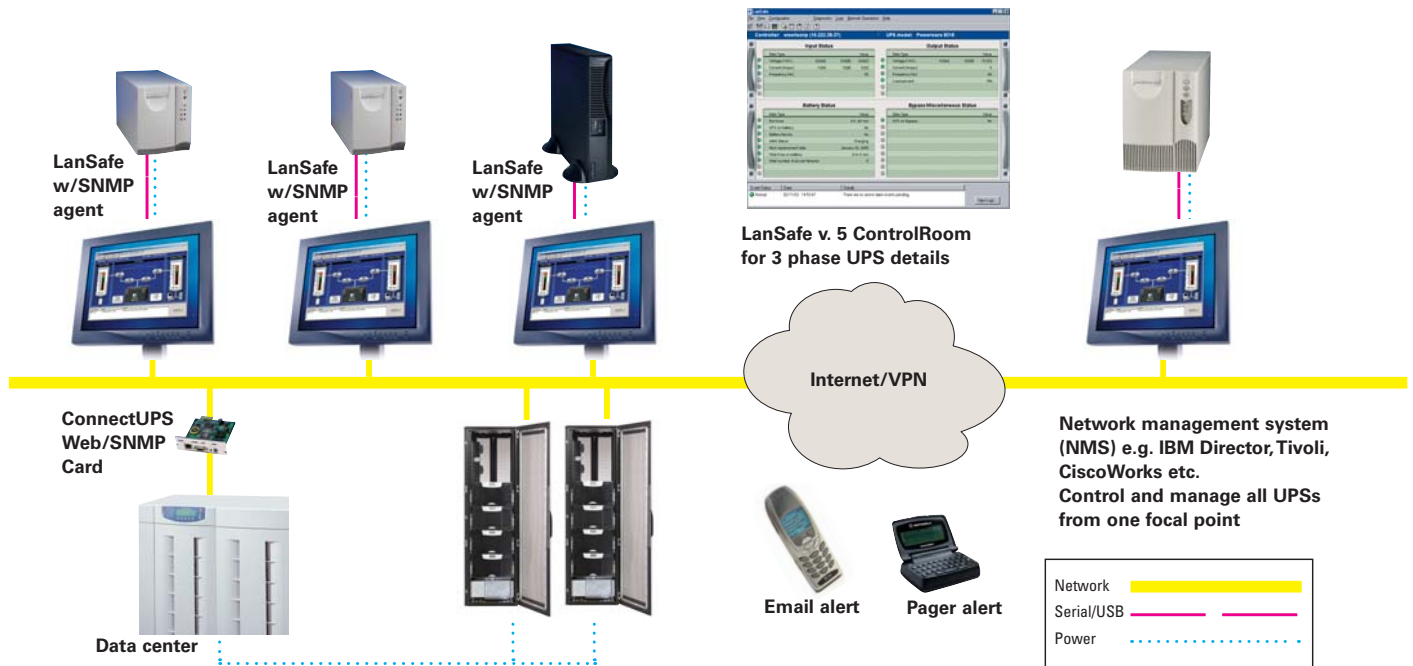
phase UPSs while ControlRoom serves as the default for three phase UPSs. The third display format available is the History View, which allows users to review a year of UPS events at-a-glance in a calendar format. The favorite default view can be changed at any given time via the LanSafe preferences menu.

Automatic Regional Settings

LanSafe incorporates Automatic Regional Setting Detection with local language support capabilities. Date, time,

temperature and UPS receptacle graphics are automatically selected according to the operating system's regional settings. Measurements are displayed around the globe in formats users are familiar with.

With intuitive views and functions, a simplified installation procedure, and an array of powerful new features, comprehensive power management has never been easier.



The new LanSafe provides comprehensive support for both Powerware single-phase and three-phase UPS products via serial, USB and network connectivity options.

How would you like to view your UPS today?

LanSafe offers three user-friendly, custom views for monitoring status, metering information and the internal workings of a UPS. Each view provides a different level of available data, allowing various user groups to select the most compelling and useful view for their specific needs.

PowerScope View

The default view for single phase UPSs is 3-D PowerScope, which provides crisp, real-time animation of the power flow through the UPS components. Status and metering information is intuitively available at-a-glance in a graphical format. UPS component topology is automatically detected depending on the UPS model used.

Toolbar buttons
Quick-launch most common tasks

LanSafe controller name, location and UPS model

Animated UPS topology display

Output voltage meter

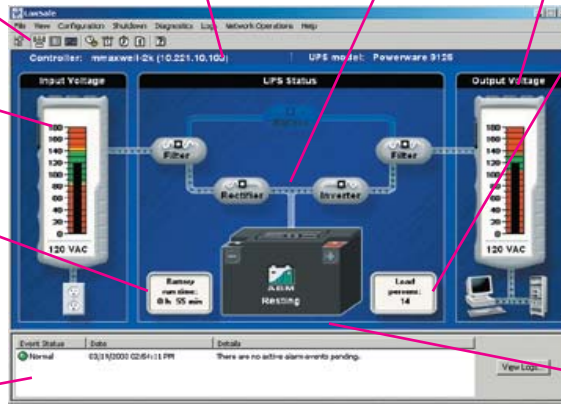
Input voltage meter

Battery runtime
Amount of time the UPS can operate on battery power

Load percent
Percent of maximum output load the UPS supports the number increases when new devices are plugged into the UPS

Active events log

ABM® Technology
Exclusive three-stage charging technique that significantly extends battery life



ControlRoom View

The ControlRoom View is the default view for 3 phase UPSs. It provides a comprehensive listing of UPS metering data including inputs, outputs, battery and UPS status information. Color-coded LED status indicators draw attention to UPS alarms.

Input status panel
Incoming power measurements from utility provider

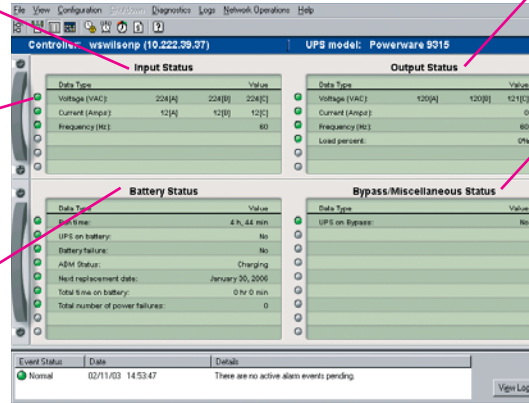
LED status indicators
Color-coded LEDs draw attention to UPS alarms

Battery status panel
Keeps you informed on vital UPS battery-related information

Output Status Panel
Outgoing power measurements (what your UPS is feeding the protected devices)

Bypass/misc. panel
Displays important status information - stay informed of UPS temperature, fan and bypass status, etc.

View Logs
Check previously occurred alarms and status changes



History View

The LanSafe History View provides a 24x7x365 visual representation of the system event log in a calendar format. UPS events can easily be reviewed by year, at-a-glance. Color-coded dates display power events that have occurred in the system.

It has never been easier to review historical power problems: what happened, when it happened, how severe the event was, as well as how often it has annually reoccurred. The user may focus on any calendar date to obtain information on the event time, along with a description of the problem.

Go back in time

Select previous years with a calendar-format events summary

Double-click color-coded event dates for more info

Get detailed info of occurred power events

24x7x365 Power Event Calendar

Check a full year of power events at-a-glance

Date since data collected

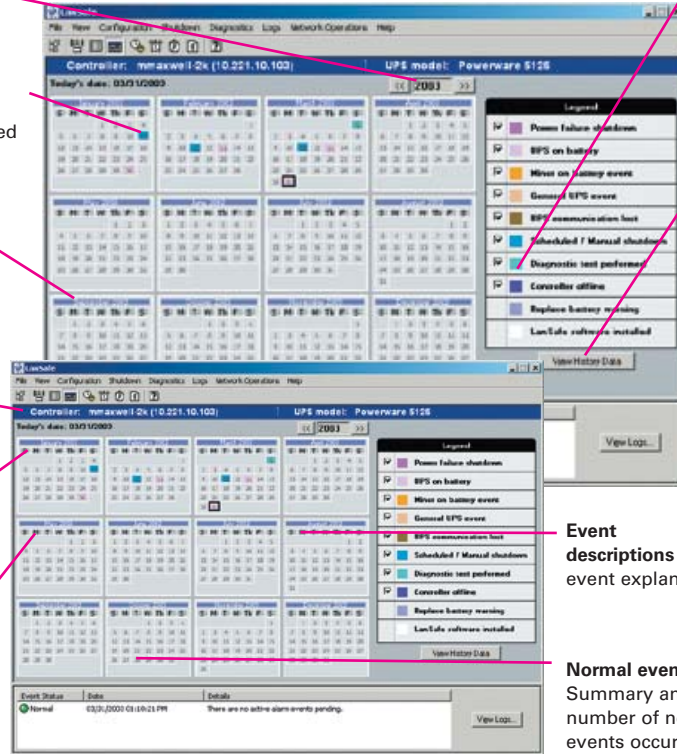
Data collection begins when LanSafe is installed

Critical events

Summary and number of critical events occurred

Warning events

Summary and number of warning events occurred



Select events to review those events that you are interested in

View history data summary Actual number of normal, warning and critical power events occurred

Event descriptions event explanations

Normal events Summary and number of normal events occurred

Stealth Mode Operation - The invisible sentinel

The Eaton-exclusive Stealth Mode Operation feature enables LanSafe to run invisibly in the background without visual traces. This is particularly useful when integrating LanSafe into a point-of-sale (POS) system, automatic teller machine (ATM) or other environment in which user-awareness of LanSafe is not an option.

When enabled, the user will not see any UPS alarm popups on local ATM/POS computer monitors due to power problems. However, system administrators monitoring the ATM/POS network will still receive remote SNMP alarms to their network management systems.



Stealth Mode Operation Removes visual traces, like the LanSafe system tray icon and popup alarms, but still notifies the system administrator "silently" via SNMP

Cost Savings Calculator - Discover the bottom line

The Cost savings Calculator (patent pending) feature is used to determine the amount of money saved by the UPS due to prevented downtime. With this innovative new tool, LanSafe will do the math and generate reports using statistical data gathered from that specific UPS system, based on the number of power failures and blackout duration. Calculations can easily be exported to spreadsheets, email and other applications. The user, according to their environment, enters the base costs for calculations.

One-time cost

One-time cost per incident factors include data loss, customer transaction failure, and hardware and software infrastructure damage

Cumulative data

LanSafe keeps track of the total time the UPS has been on battery and the number of power failures

Export calculations

Paste cost savings calculations into your favorite reporting application

Savings Type	Event Data	Cost	Savings
Per incident savings:	2 x	\$500.00 =	\$1,000.00
Hourly savings:	0 hr 5 min x	\$15,000.00 =	\$1,250.00
Total savings:			\$2,250.00

Per hour cost

Per hour cost factors include hourly rates for idle employees and missed transaction opportunities

The bottom line

How much money your UPS is saving by preventing costly downtime

Calculate data

Calculate either recent or cumulative savings

Automatic Regional Settings Detection

LanSafe incorporates Automatic Regional Settings Detection with local language support capabilities. Date, time, temperature and UPS receptacle graphics are automatically selected according to the operating system's regional settings. Measurements are displayed around the globe in the formats users are familiar with. Any of the detected settings can be overridden manually.

Display system info in main views

Enable/disable system info bar in main views

Choose default view Select a favorite LanSafe view as the default:

PowerScope, ControlRoom or History

Audible alarms

Enable/disable audio notifications

Select receptacles per region

Choose the receptacle displayed in the PowerScope View according to the region (auto-selected using system locale)

Change date, time, and temperature formats

Fahrenheit/Celcius temperature, 24/12 hour time and world date formats (auto-selected using system locale)

System Requirements

Windows

- Windows 2000
- Windows Server 2003
- Windows XP
- Windows Vista

UNIX

- HP-UX
- IBM AIX (RISC & PowerPC)
- Red Hat Linux
- SuSE Linux
- SCO UNIX
- SGI IRIX
- Solaris

Other

- Mac OS
- Novell NetWare

* Check www.powerware.com for most recent software updates and version support



**PowerChain
Management™
Solutions**

UNITED STATES
8609 Six Forks Road
Raleigh, NC 27615 U.S.A.
Toll free: 1.800.356.5794
or 919.872.3020

www.powerware.com

CANADA
Ontario: 416.798.0112
Toll free: 1.800.461.9166

LATIN AMERICA
Argentina: 54.11.4343.6323
Brazil: 55.11.3616.8500
México: 52.55.5488.5252

EUROPE/MIDDLE EAST/AFRICA
Denmark: 45.3686.7910
Finland: 358.94.52.661
France: 33.1.6012.7400
Germany: 49.7841.666.0
Italy: 39.02.66.04.05.40
Norway: 47.23.03.65.50
Sweden: 46.8.598.940.00
United Kingdom: 44.1753.608.700

ASIA PACIFIC
Australia/NZ: 61.2.9878.5000
China: 86.21.6361.5599
HK/Korea/Taiwan: 852.2745.6682
India: 91.11.2649.9414 to 18
Singapore/SEA: 65.6825.1668

Eaton, Powerware, LanSafe, X-Slot, Status@ aGlance are trade names, trademarks and/or service marks of Eaton Corporation or its subsidiaries and affiliates. All other trademarks are property of their respective owners.

© 2007 Eaton Corporation
All Rights Reserved
Printed in USA
SFT19FXA
April 2007

EAT•N

Powerware